

Vent-A-Hood®

V-Line Blower

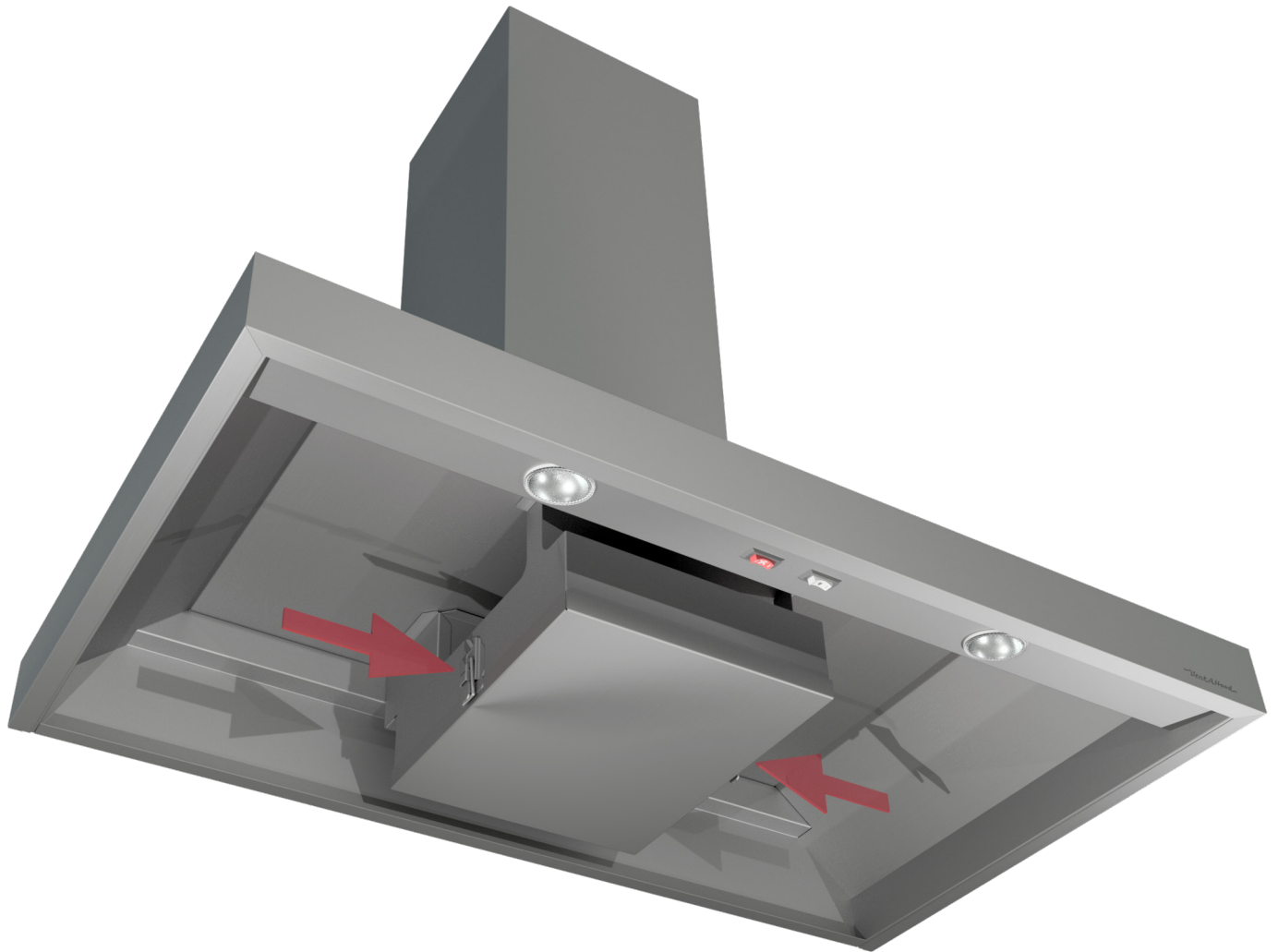
How to Clean

For models starting with K250.



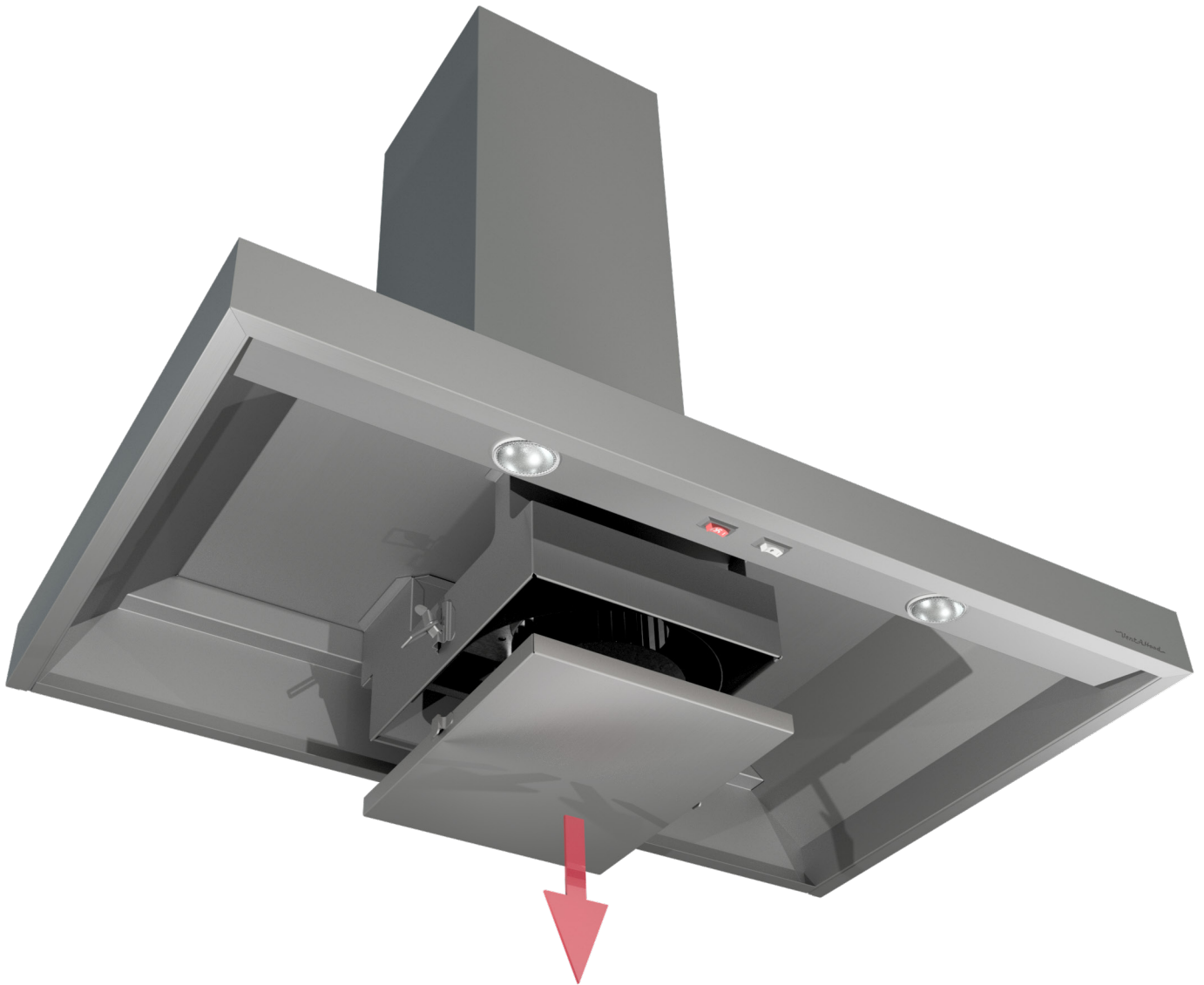
Step 1. Release the blower pan.

Be sure the motor is turned off before proceeding. The blower pan is easily removed for cleaning by unsnapping the suitcase latches (one on each side of the blower assembly).



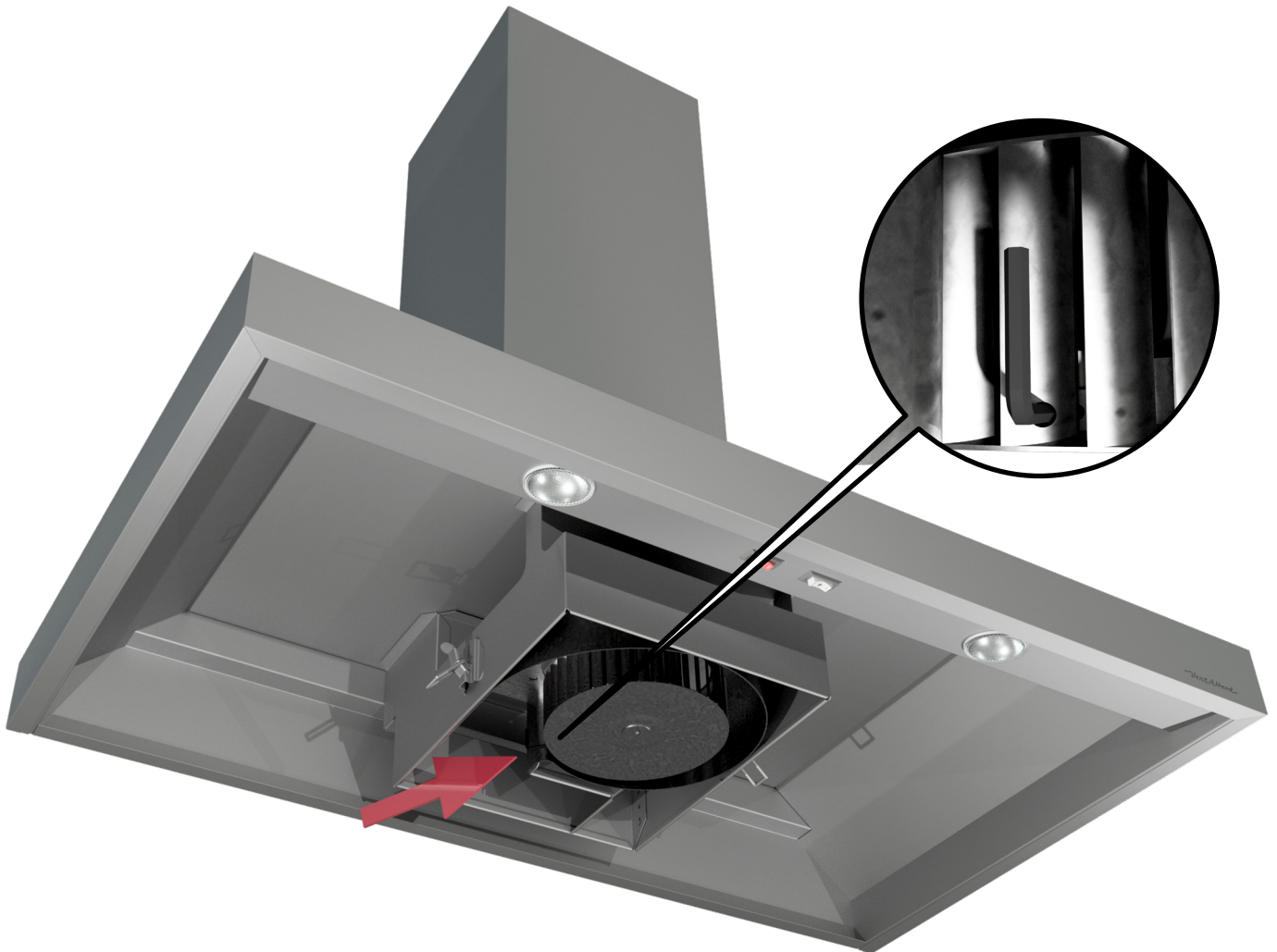
Step 2. Remove the blower pan.

With the blower pan latches released, remove the blower pan by pulling the pan downward. Be careful to keep the tray level if the hood has been recently used.



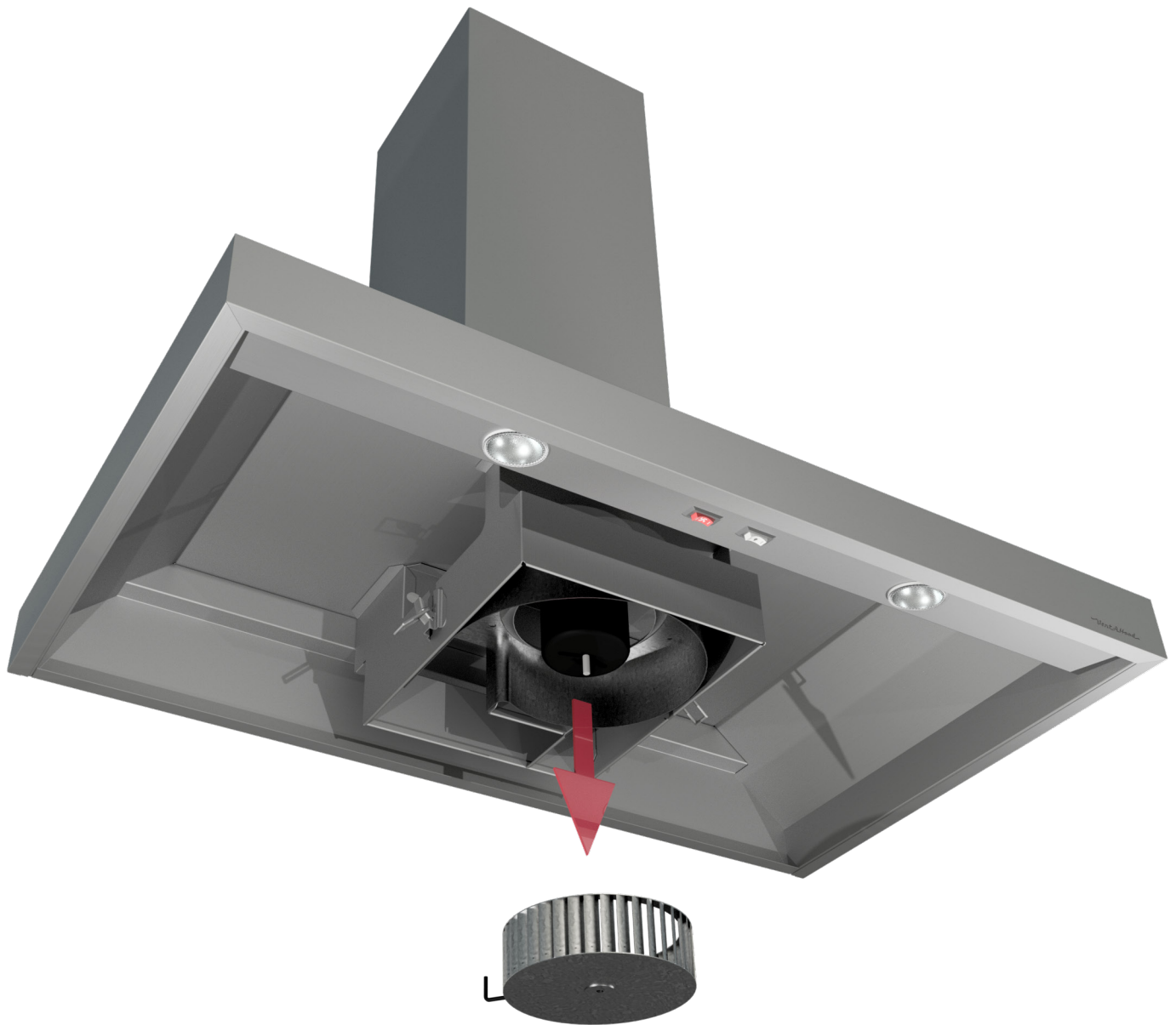
Step 3. Release the blower wheel.

The blower wheel can be removed by using a 1/8" hex wrench. There is a small set screw on the side of the hub in the base of the wheel that tightens up against a "flat" spot on the motor shaft. There is also a small hole in one of the blades of the blower wheel that aligns with the set screw. Insert the wrench through the hole in the fan blade and into the set screw. The set screw must be turned 1/2 turn counterclockwise to free the blower wheel from the motor shaft. If the hood is more than five years old and the set screw has never been loosened, it may be difficult or even impossible to remove the blower wheel. A liquid penetrating oil may help you loosen the set screw, but it might prove more practical to clean the wheel without removing it from the motor shaft.



Step 4. Remove the blower wheel.

Once the set screw is loosened, pull the blower wheel downward slightly, then gently remove the blower wheel from shaft. Use caution to avoid bending or distorting the blower wheel and take care not to move or lose the metal balancing clips that may be affixed to the blower wheel. If the blower wheel is difficult to remove, the area where the motor shaft makes contact with the blower wheel hub may need to be sprayed with a common penetrating oil such as WD-40® and allowed to soak for a short time.



Step 5. Clean the parts and reassemble.

The inside of the blower assembly that remains inside the hood can be cleaned with a soft cloth and warm soapy water (liquid dish detergent). Do not use acids, abrasives, strong detergents, solvents, or scouring pads. When cleaning interior blower surfaces, be careful to avoid any metal edges.

Clean the blower pan in a sink of warm soapy water (liquid dish detergent) and let soak for a few minutes. Wash with a sponge or dishcloth, rinse, and let drain.

A soft bristle toothbrush with warm soapy water may be used to clean the blades on the blower wheel. Alternatively, the blower wheel may be soaked in warm soapy water.

Reassemble in the opposite order of disassembly. When reinstalling the blower wheel onto the motor shaft, make sure the set screw makes direct contact with the “flat spot” on the motor shaft. Slide the blower wheel onto the motor shaft as far as it will go, making sure the top of the blower wheel does not touch the upper scroll area.

If the blower wheel is too far up, it will rub against the upper scroll area, and if it is too far down, it will rub the inside of the blower pan. Adjust the blower wheel slightly to find the correct top-to-bottom location. Tighten the set screw (clockwise) to lock the blower wheel in the correct position.

Once it's had time to completely dry, reinstall the blower pan and snap it in place via the suitcase latches (one on each side of the blower assembly).

The logo for Vent Hood, featuring the brand name in a stylized, cursive script font with a registered trademark symbol.